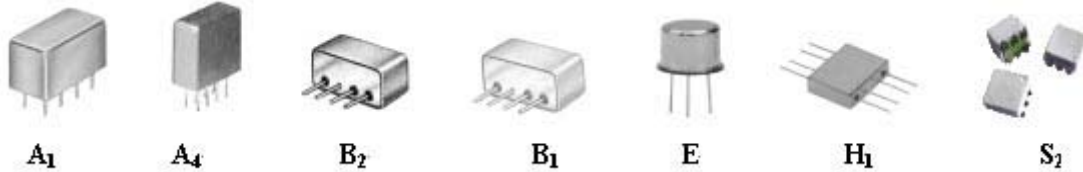


RF 0° 2-Way



0° Power Splitters/Combiners 50Ω/75Ω Surface Mount

2Way												
Model No.	Freq. Range (MHz) fL-fU	Insertion Loss (dB)			Isolation (dB)			(VSWR)		Unbalance		Case Style
		L	M	U	L	M	U	Max		Phase	Amp	
		Typ/Ma	Typ/Ma	Typ/Ma	Typ/Min	Typ/Min	Typ/Min	In	Out	(°) Max	(dB) Max	
CMIFLS2-2-1	1-600	0.4/0.7	0.5/0.8	0.6/1.0	25/20	30/20	25/20			5	0.6	S2
CMIFLS2-2-4	10-1000	0.4/0.7	0.5/0.8	0.6/1.0	25/20	30/20	20/18			7	0.7	S2
CMIFLS2-2-11	20-2000	0.6/0.8	0.7/1.0	0.8/1.5	15	15	15			5	0.7	S2
CMIFLS2-2-2000	2000±5%		0.4/0.6			20				2	0.3	S2

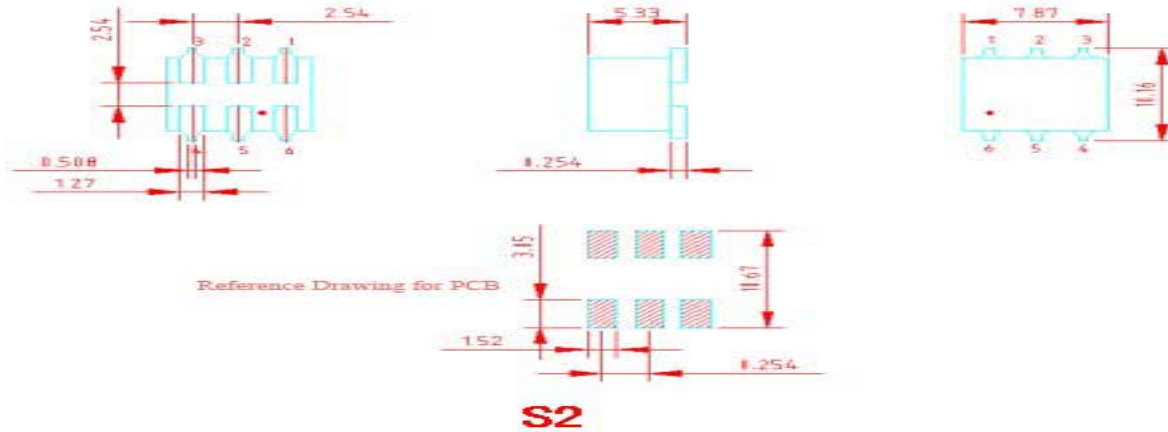
Pin Connections:

Model No.	Sum Port	Port 1	Port 2	Port 3	Port 4	Gnd Ext.
CMIFLS2-2-	6	3	4			1,2,5

CALL OUR SALES DEPARTMENT FOR MORE INFORMATION OR VARIATIONS OF THIS PRODUCT.

**Corry Micronics, Inc. One Plastics Rd. - Corry, PA 16407
(814) 664-7728 Fax (814) 664-4582 www.cormic.com**

Corry Micronics Inc. herein referred to CMI, believes this information to be accurate, but makes no warranties, expressed or implied as to the accuracy of this document. CMI assumes no liability for any injury, loss, damage, direct or consequential arising from the use of our products. User assumes all risk whatsoever in connection with it's intended use. CMI also reserves the right to change this document without notice.



0° Power Splitters/Combiners 50Ω/75Ω Plug-In & Flatpack

2Way												
Model No.	Freq. Range (MHz) fL-fU	Insertion Loss (dB)			Isolation (dB)			(VSWR)		Unbalance		Case Style
		L	M	U	L	M	U	Max		Phase	Amp	
		Typ/Ma	Typ/Ma	Typ/Ma	Typ/Min	Typ/Min	Typ/Min	In	Out	(°) Max	(dB) Max	
CMIFLA-2-1	0.1-400	0.2/0.6	0.4/0.7	0.6/1.0	20/15	25/20	25/20			4	0.3	A1
CMIFLA-2-1S	1-600	0.3/0.6	0.5/0.9	0.7/1.0	25/20	30/20	25/20			4	0.3	A1
CMIFLA-2-2	0.005-60	0.3/0.6	0.3/0.6	0.6/1.0	25/20	25/20	25/20			4	0.3	A1
CMIFLA-2-4	10-1000	0.6/1.0	0.6/1.0	0.7/1.2	25/20	25/20	25/20			8	0.4	A1
CMIFLA-2-5	10-1400	0.3/0.6	0.6/1.0	0.9/1.6	18	17	17			8	0.4	A1
CMIFLA-2-11	10-2000	0.6/0.8	0.6/0.8	1.0/1.2	18/16	20/16	18/15			5	0.5	A1
CMIFLA4-2-1	0.1-450	0.3/0.5	0.4/0.75	0.6/1.0	20/15	30/20	30/20			4	0.3	A4
CMIFLA4-2-1S	2-650	0.3/0.5	0.6/0.8	0.8/1.2	20/18	30/20	22/20			4	0.3	A4
CMIFLA4-2-11	5-2000	0.6/0.8	0.6/0.8	1.0/1.2	18/15	18/15	18/15			5	0.4	A4
CMIFLB-2-1	1-400	0.3/0.6	0.3/0.7	0.8/1.0	30/25	30/25	25/20			4	0.6	B2
CMIFLB-2-2	0.01-100	0.3/0.6	0.3/0.7	0.8/1.0	25/20	25/20	20/18			4	0.4	B1
CMIFLE-2-1	0.5-600	0.2/0.4	0.3/0.4	0.7/1.0	25/20	25/20	25/20			6	0.5	E
CMIFLE-2-4	10-1000	0.4/0.8	0.6/1.0	0.7/1.2	25/20	25/20	20/18			6	0.5	E
CMIFLH-2-113	0.4-400	0.2/0.4	0.3/0.5	0.4/0.8	25	25	25			1	0.2	H1
CMIFLH-2-109	10-500	0.2/0.3	0.3/0.4	0.4/0.8	30/25					2	0.6	H1
CMIFLH-2-323	10-1000	0.2/0.6	0.4/0.7	0.6/1.0	25/20					3	0.6	H1
CMIFLH-2-313	20-2000	0.7/0.8	0.7/1.0	1.0/1.2	25/20					8	0.6	H1

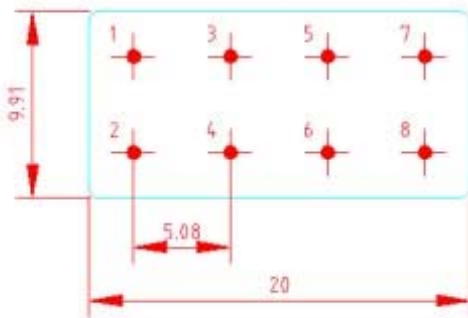
CALL OUR SALES DEPARTMENT FOR MORE INFORMATION OR VARIATIONS OF THIS PRODUCT.

**Corry Micronics, Inc. One Plastics Rd. - Corry, PA 16407
(814) 664-7728 Fax (814) 664-4582 www.cormic.com**

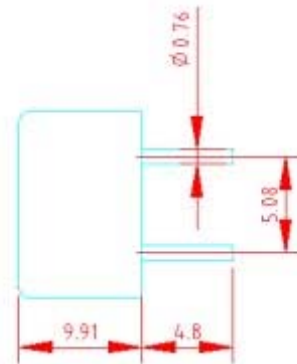
Corry Micronics Inc. herein referred to CMI, believes this information to be accurate, but makes no warranties, expressed or implied as to the accuracy of this document. CMI assumes no liability for any injury, loss, damage, direct or consequential arising from the use of our products. User assumes all risk whatsoever in connection with it's intended use. CMI also reserves the right to change this document without notice.

Pin Connections:

Model No.	Sum Port	Port 1	Port 2	Gnd Ext.
CMIFLA	1	5	6	2,3,4,7,8
CMIFLB	1	2	4	3
CMIFLE	2	1	3	4
CMIFLH	8	5	4	1,2,3,6,7



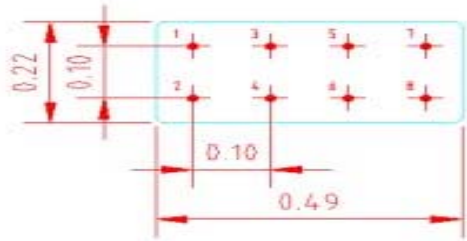
A1



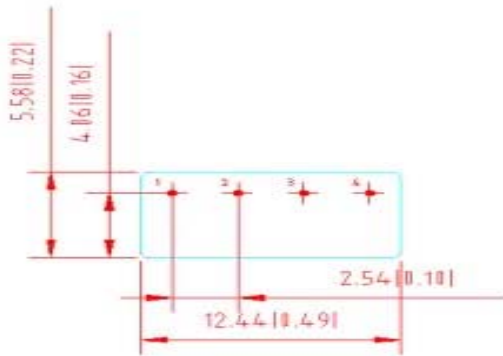
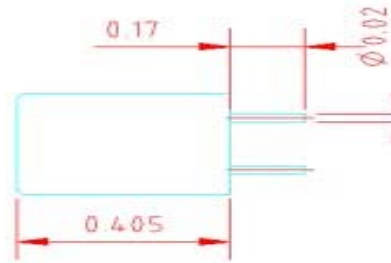
CALL OUR SALES DEPARTMENT FOR MORE INFORMATION OR VARIATIONS OF THIS PRODUCT.

**Corry Micronics, Inc. One Plastics Rd. - Corry, PA 16407
(814) 664-7728 Fax (814) 664-4582 www.cormic.com**

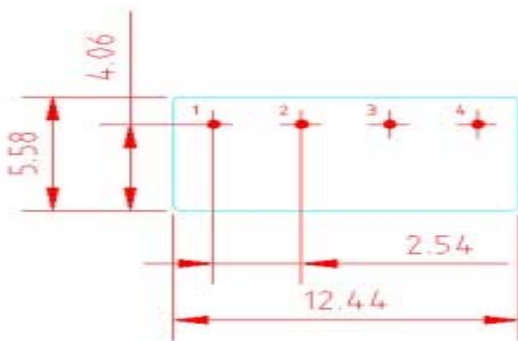
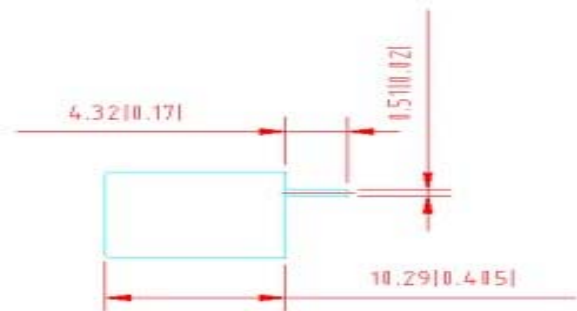
Corry Micronics Inc. herein referred to CMI, believes this information to be accurate, but makes no warranties, expressed or implied as to the accuracy of this document. CMI assumes no liability for any injury, loss, damage, direct or consequential arising from the use of our products. User assumes all risk whatsoever in connection with it's intended use. CMI also reserves the right to change this document without notice.



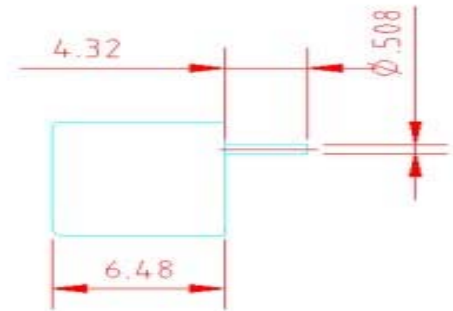
A4



B1



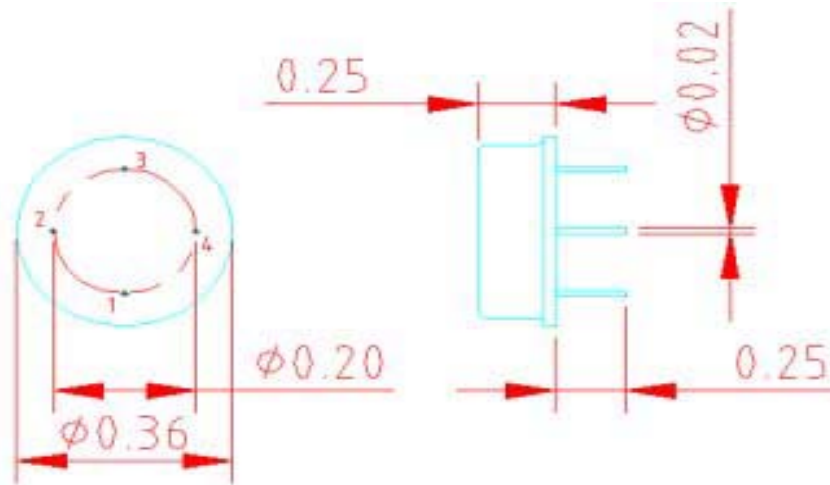
B2



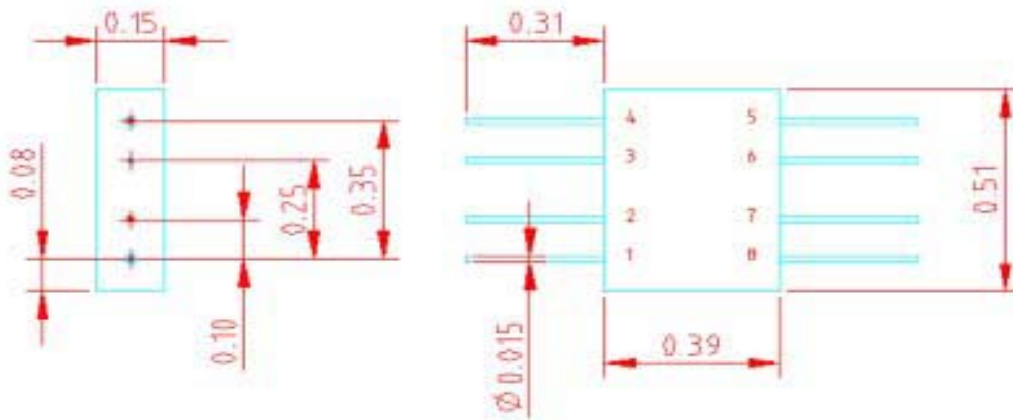
CALL OUR SALES DEPARTMENT FOR MORE INFORMATION OR VARIATIONS OF THIS PRODUCT.

**Corry Micronics, Inc. One Plastics Rd. - Corry, PA 16407
(814) 664-7728 Fax (814) 664-4582 www.cormic.com**

Corry Micronics Inc. herein referred to CMI, believes this information to be accurate, but makes no warranties, expressed or implied as to the accuracy of this document. CMI assumes no liability for any injury, loss, damage, direct or consequential arising from the use of our products. User assumes all risk whatsoever in connection with it's intended use. CMI also reserves the right to change this document without notice.



E



(4,5,8 as glass insulator Pin)

H1

CALL OUR SALES DEPARTMENT FOR MORE INFORMATION OR VARIATIONS OF THIS PRODUCT.

**Corry Micronics, Inc. One Plastics Rd. - Corry, PA 16407
(814) 664-7728 Fax (814) 664-4582 www.cormic.com**

Corry Micronics Inc. herein referred to CMI, believes this information to be accurate, but makes no warranties, expressed or implied as to the accuracy of this document. CMI assumes no liability for any injury, loss, damage, direct or consequential arising from the use of our products. User assumes all risk whatsoever in connection with it's intended use. CMI also reserves the right to change this document without notice.

0° Power Splitters/Combiners 50Ω/75Ω Coaxial

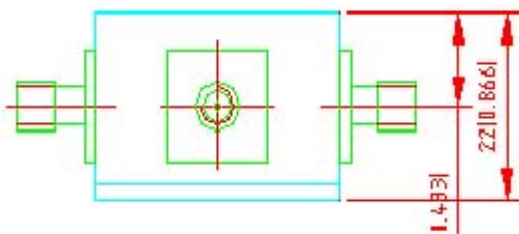
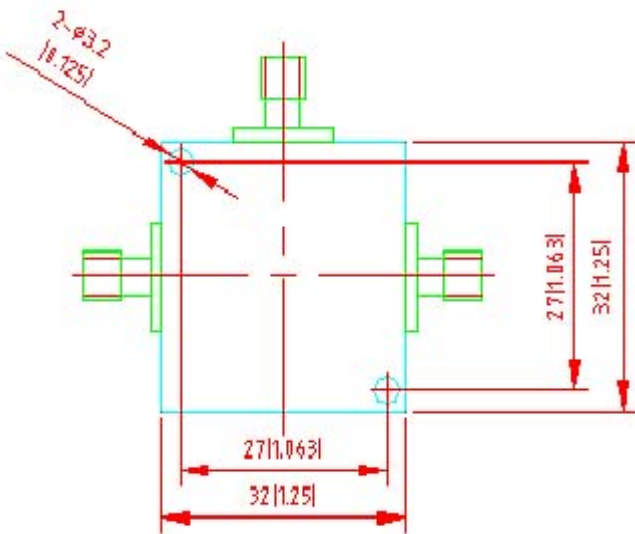
2Way												
Model No.	Freq. Range (MHz) fL-fU	Insertion Loss (dB)			Isolation (dB)			(VSWR)		Unbalance		Case Style
		L	M	U	L	M	U	Max		Phase	Amp	
		Typ/Ma	Typ/Ma	Typ/Ma	Typ/Min	Typ/Min	Typ/Min	In	Out	(°) Max	(dB) Max	
CMIFLT-2-1	5-500	0.2/0.5	0.3/0.6	0.6/0.8	35/25	28/20	25/20			4	0.3	T12-3
**CMIFLT-2-1-75	0.25-300	0.4/0.75	0.4/0.75	0.4/1.0	25/20	30/25	25/20			5	0.3	T12-3
**CMIFLT-2-1W-75	5-600	0.2/0.6	0.3/0.7	0.5/0.9	40/25	40/30	30/20			3	0.4	T12-3
CMIFLT-2-1W	1-750	0.2/0.5	0.4/0.8	0.8/1.0	30/20	25/20	23/18			4	0.3	T12-3
CMIFLT-2-2	10-1000	0.2/0.5	0.5/0.8	0.8/1.0	25/20	25/20	20/11			4	0.3	T12-3
CMIFLT-2-11	10-2000	0.5/0.9	0.5/1.0	0.6/1.0	19/10	18/13	20/11			6	0.5	T12-3
CMIFLT-2-11V	10-2000	0.5/0.9	0.5/1.0	0.6/1.0	19/10	18/13				62	0.5	T14

** For 75Ω transmission line

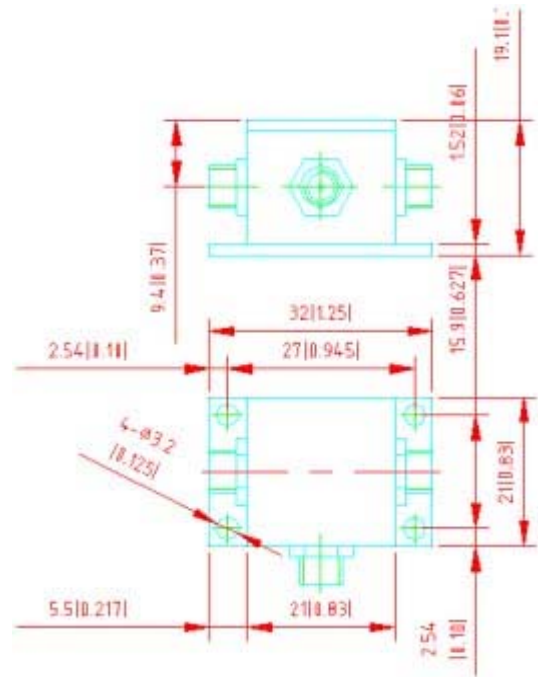
CALL OUR SALES DEPARTMENT FOR MORE INFORMATION OR VARIATIONS OF THIS PRODUCT.

**Corry Micronics, Inc. One Plastics Rd. - Corry, PA 16407
(814) 664-7728 Fax (814) 664-4582 www.cormic.com**

Corry Micronics Inc. herein referred to CMI, believes this information to be accurate, but makes no warranties, expressed or implied as to the accuracy of this document. CMI assumes no liability for any injury, loss, damage, direct or consequential arising from the use of our products. User assumes all risk whatsoever in connection with it's intended use. CMI also reserves the right to change this document without notice.



T12-3



T14

CALL OUR SALES DEPARTMENT FOR MORE INFORMATION OR VARIATIONS OF THIS PRODUCT.

**Corry Micronics, Inc. One Plastics Rd. - Corry, PA 16407
(814) 664-7728 Fax (814) 664-4582 www.cormic.com**

Corry Micronics Inc. herein referred to CMI, believes this information to be accurate, but makes no warranties, expressed or implied as to the accuracy of this document. CMI assumes no liability for any injury, loss, damage, direct or consequential arising from the use of our products. User assumes all risk whatsoever in connection with it's intended use. CMI also reserves the right to change this document without notice.

RF 0° 3-Way



A1



A4



T12-4



T16-1



T16-2

0° Power Splitters/Combiners 50Ω/75Ω

3Way												
Model No.	Freq. Range (MHz) fL-fU	Insertion Loss (dB)			Isolation (dB)			(VSWR)		Unbalance		Case Style
		L	M	U	L	M	U	Max		Phase	Amp	
		Typ/Ma	Typ/Ma	Typ/Ma	Typ/Min	Typ/Min	Typ/Min	In	Out	(°) Max	(dB) Max	
CMIFLA-3-2	0.1-50	0.2/0.4	0.2/0.4	0.2/0.4	40/30	40/30	30/25			2	0.1	A1
CMIFLA-3-13	1-200	0.3/0.5	0.3/0.5	0.4/0.7	40/35	40/30	35/30			4	0.3	A1
*CMIFLA-3-1-75	1-200	0.6/1.0	0.3/0.7	0.6/1.0	35/20	35/25	35/25			4	0.3	A1
CMIFLA-3-1W	50-750	0.4/1.0	0.9/1.4		25/20	25/20				7	0.7	A4
CMIFLH-3-117	1-300	0.3/0.6	0.3/0.6	0.6/1.2	35/30	30/20	25/20				0.4	H4
CMIFLH-3-323	25-1000	0.3/0.8	0.3/0.8	0.8/1.2	25/15	30/20	35/14			4	0.5	H4
CMIFLT-3-13	1-300	0.3/0.5	0.4/0.6	0.4/0.6	35/30	30/20	25/30			4	0.4	T12-4
CMIFLT-3-4	10-1000	0.3/0.8	0.3/0.8	0.8/1.2	25/15	30/20	35/24			4	0.5	T12-4

*75Ω Model

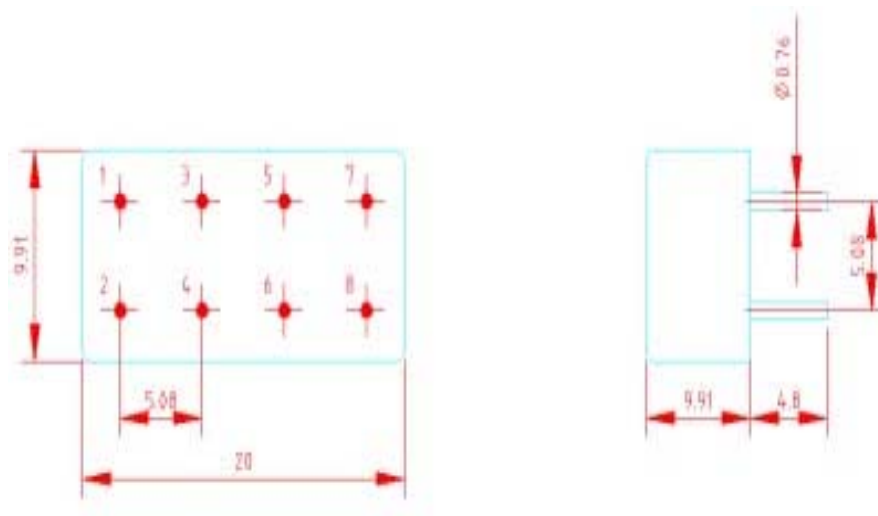
CALL OUR SALES DEPARTMENT FOR MORE INFORMATION OR VARIATIONS OF THIS PRODUCT.

**Corry Micronics, Inc. One Plastics Rd. - Corry, PA 16407
(814) 664-7728 Fax (814) 664-4582 www.cormic.com**

Corry Micronics Inc. herein referred to CMI, believes this information to be accurate, but makes no warranties, expressed or implied as to the accuracy of this document. CMI assumes no liability for any injury, loss, damage, direct or consequential arising from the use of our products. User assumes all risk whatsoever in connection with it's intended use. CMI also reserves the right to change this document without notice.

Pin Connections:

Model No.	Sum Port	Port 1	Port 2	Port 3	Gnd Ext.
CMIFLA-3-X	6	1	2	5	3,4,7,8
CMIFLH-3-	3	6	8	10	1,2,4,5,7,9



A1

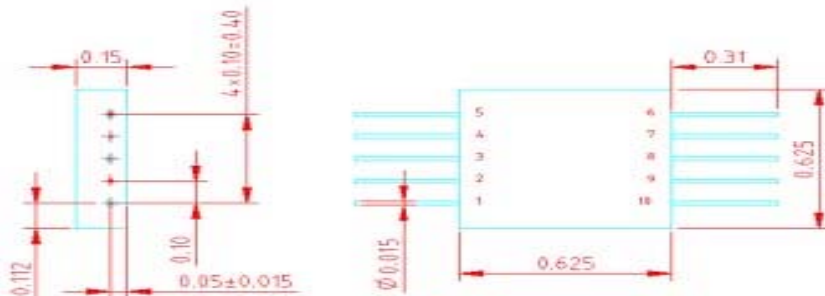
CALL OUR SALES DEPARTMENT FOR MORE INFORMATION OR VARIATIONS OF THIS PRODUCT.

**Corry Micronics, Inc. One Plastics Rd. - Corry, PA 16407
(814) 664-7728 Fax (814) 664-4582 www.cormic.com**

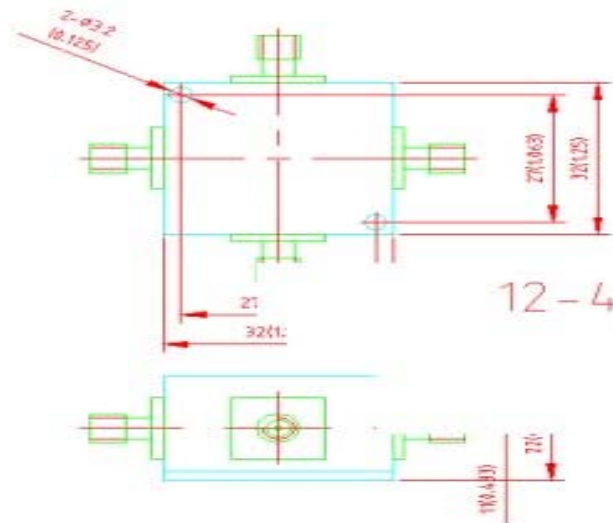
Corry Micronics Inc. herein referred to CMI, believes this information to be accurate, but makes no warranties, expressed or implied as to the accuracy of this document. CMI assumes no liability for any injury, loss, damage, direct or consequential arising from the use of our products. User assumes all risk whatsoever in connection with it's intended use. CMI also reserves the right to change this document without notice.



A4



H4



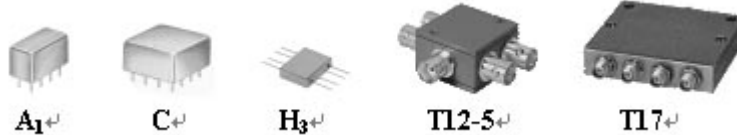
T12

CALL OUR SALES DEPARTMENT FOR MORE INFORMATION OR VARIATIONS OF THIS PRODUCT.

**Corry Micronics, Inc. One Plastics Rd. - Corry, PA 16407
(814) 664-7728 Fax (814) 664-4582 www.cormic.com**

Corry Micronics Inc. herein referred to CMI, believes this information to be accurate, but makes no warranties, expressed or implied as to the accuracy of this document. CMI assumes no liability for any injury, loss, damage, direct or consequential arising from the use of our products. User assumes all risk whatsoever in connection with it's intended use. CMI also reserves the right to change this document without notice.

RF 0° 4-Way



0° Power Splitters/Combiners 50Ω/75Ω

4Way													
Model No.	Freq. Range (MHz) fL-fU	Insertion Loss (dB)			Isolation (dB)			(VSWR)		Unbalance		Case Style	
		L	M	U	L	M	U	Max	In	Out	Phase (°) Max		Amp (dB) Max
		Typ/Ma	Typ/Ma	Typ/Ma	Typ/Min	Typ/Min	Typ/Min						
CMIFLA-4-1	0.1-200	0.4/0.6	0.5/0.75	0.7/1.0	30/20	25/20	25/20				8	0.3	A1
CMIFLA-4-1W	1-500	0.4/0.8	0.5/1.0	0.8/1.5	25/20	25/18	25/18				5	0.5	A1
CMIFLC-4-1	0.1-200	0.4/0.6	0.5/0.8	0.7/1.0	30/20	30/20	25/20				6	0.5	C
CMIFLC-4-1W	1-500	0.4/0.88	0.5/1.0	0.8/1.5	25/20	25/20	25/20				5	0.5	C
CMIFLC-4-4N	810-960		1.0/1.2		25/20						6	0.6	C
CMIFLC-4-4	10-1000	0.5/0.8	0.8/1.8	1.5/2.5	25/20	20/15	18/15				20	0.7	C
CMIFLH-4-1	1-200	0.8/1.0	0.8/1.0	0.8/1.2	25/20	25/20	25/20				4	0.4	H3
CMIFLT-4-1	1-500	0.5/1.5	0.6/1.5	0.6/1.5	25/20	25/20	25/20				8	0.4	T12-5
CMIFLT-4-4	10-1000	0.4/1.2	0.6/0.9	1.5/2.0	25/20	25/20	25/20				8	0.7	T12-5
CMIFLT-4-3	10-300	0.5/0.8	0.5/0.8	0.9/1.2	30/25	30/25	30/25					0.2	T12-5
*CMIFLT-4-1-75	1-200	0.4/0.7	1.0	0.7/1.2	30/20	25/20	25/20				10	0.3	T12-5
CMIFLT-4-1Z	10-500	1.0	1.0	1.0	25	25	25	1.3			5	0.5	T17
CMIFLT-4-2Z	10-1000	1.0	0.7	1.0	25	25	22	1.3			5	0.5	T17

*75Ω Model

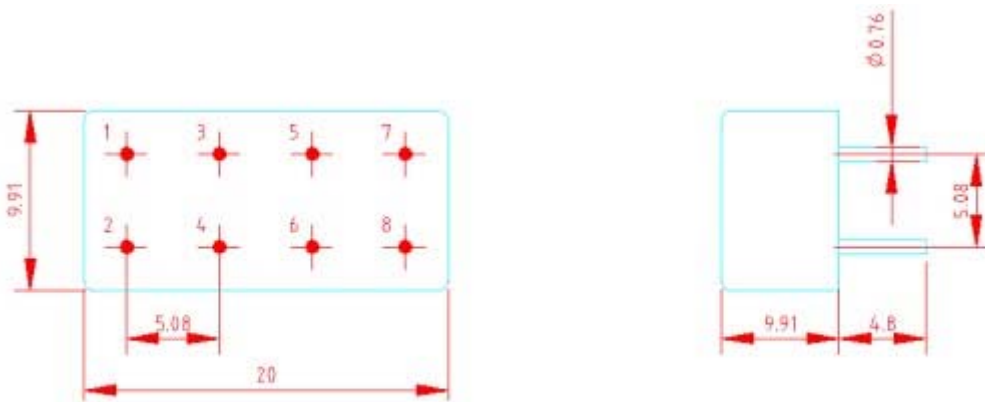
CALL OUR SALES DEPARTMENT FOR MORE INFORMATION OR VARIATIONS OF THIS PRODUCT.

**Corry Micronics, Inc. One Plastics Rd. - Corry, PA 16407
(814) 664-7728 Fax (814) 664-4582 www.cormic.com**

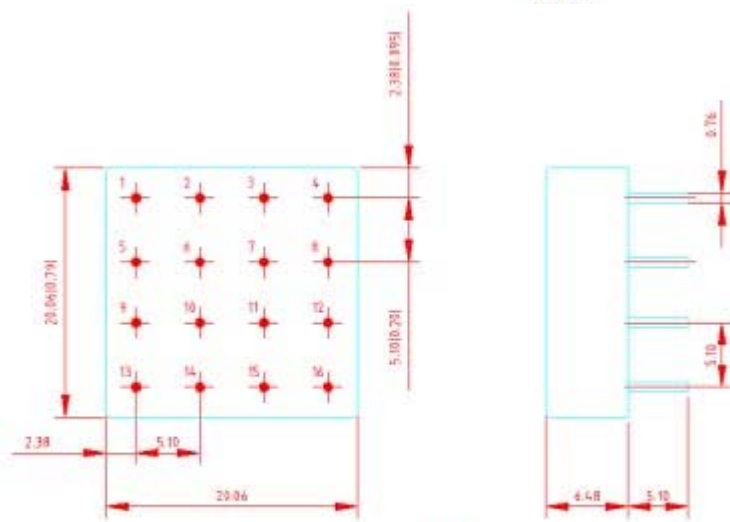
Corry Micronics Inc. herein referred to CMI, believes this information to be accurate, but makes no warranties, expressed or implied as to the accuracy of this document. CMICMIFLA assumes no liability for any injury, loss, damage, direct or consequential arising from the use of our products. User assumes all risk whatsoever in connection with it's intended use. CMICMIFLA also reserves the right to change this document without notice.

Pin Connections:

Model No.	Sum Port	Divide Port	Gnd Ext.
CMIFLA-4-	4	1,2,7,8	3,5,6
CMIFLC-4-	2	5,8,9,12	7,10,11,13,14,15,16
CMIFLH-4-	6	1,4,5,8	2,3,7



A1

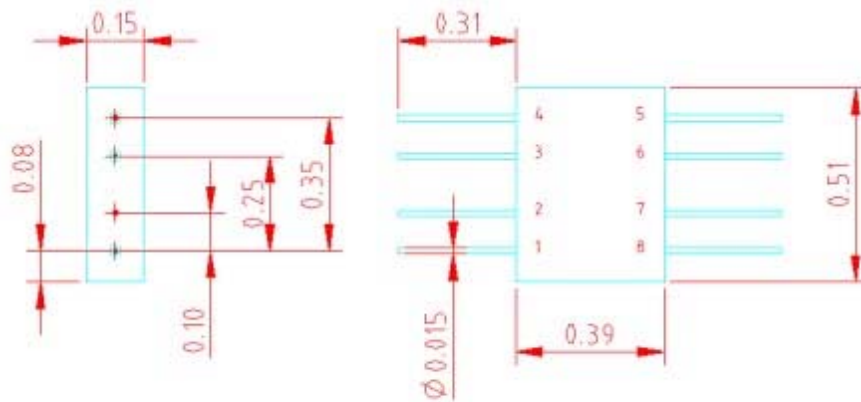


C

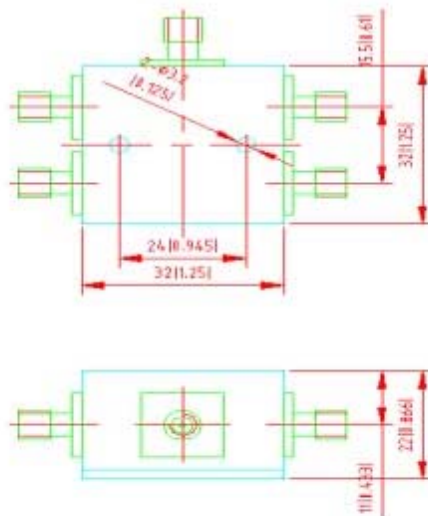
CALL OUR SALES DEPARTMENT FOR MORE INFORMATION OR VARIATIONS OF THIS PRODUCT.

**Corry Micronics, Inc. One Plastics Rd. - Corry, PA 16407
(814) 664-7728 Fax (814) 664-4582 www.cormic.com**

Corry Micronics Inc. herein referred to CMI, believes this information to be accurate, but makes no warranties, expressed or implied as to the accuracy of this document. CMICMIFLA assumes no liability for any injury, loss, damage, direct or consequential arising from the use of our products. User assumes all risk whatsoever in connection with it's intended use. CMICMIFLA also reserves the right to change this document without notice.



H3

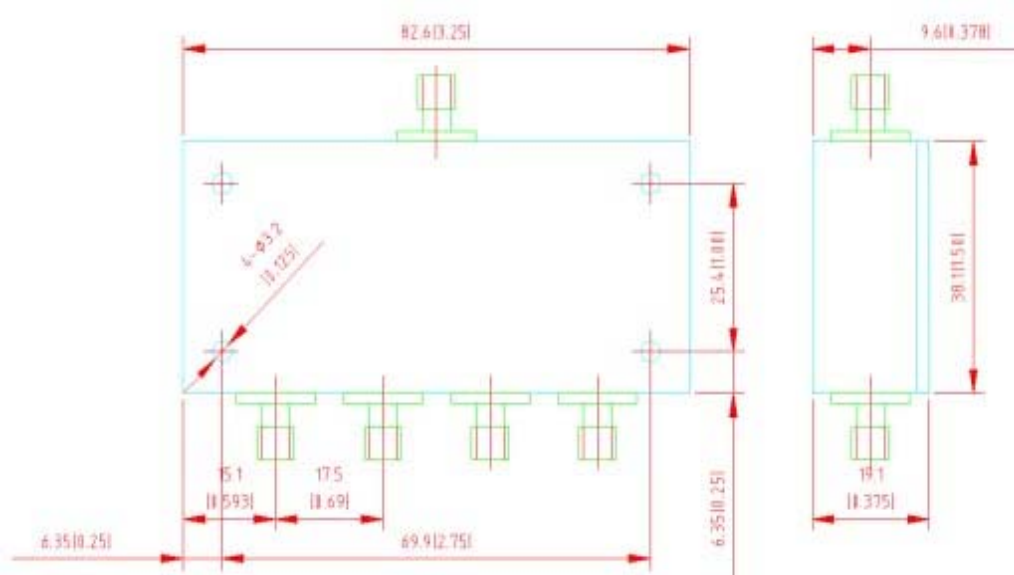


T12-5

CALL OUR SALES DEPARTMENT FOR MORE INFORMATION OR VARIATIONS OF THIS PRODUCT.

**Corry Micronics, Inc. One Plastics Rd. - Corry, PA 16407
(814) 664-7728 Fax (814) 664-4582 www.cormic.com**

Corry Micronics Inc. herein referred to CMI, believes this information to be accurate, but makes no warranties, expressed or implied as to the accuracy of this document. CMICMIFLA assumes no liability for any injury, loss, damage, direct or consequential arising from the use of our products. User assumes all risk whatsoever in connection with it's intended use. CMICMIFLA also reserves the right to change this document without notice.



T17

CALL OUR SALES DEPARTMENT FOR MORE INFORMATION OR VARIATIONS OF THIS PRODUCT.

**Corry Micronics, Inc. One Plastics Rd. - Corry, PA 16407
(814) 664-7728 Fax (814) 664-4582 www.cormic.com**

Corry Micronics Inc. herein referred to CMI, believes this information to be accurate, but makes no warranties, expressed or implied as to the accuracy of this document. CMICMIFLA assumes no liability for any injury, loss, damage, direct or consequential arising from the use of our products. User assumes all risk whatsoever in connection with it's intended use. CMICMIFLA also reserves the right to change this document without notice.

RF 0° 5&6-Way



C



T12-6



T31



T3

T20

0° Power Splitters/Combiners 50Ω/75Ω

5Way												
Model No.	Freq. Range (MHz) fL-fU	Insertion Loss (dB)			Isolation (dB)			(VSWR)		Unbalance		Case Style
		L	M	U	L	M	U	Max		Phase	Amp	
		Typ/Ma	Typ/Ma	Typ/Ma	Typ/Min	Typ/Min	Typ/Min	In	Out	(°) Max	(dB) Max	
*CMIFLC-5-1	1-300	0.2/0.5	0.6/1.0	1.5/2.0	25/20	23/20	20/18			8	0.6	C
CMIFLC-5-1-75	1-300	0.4/0.6	0.6/0.9	0.9/1.3	35/20	30/20	20/17			8	0.6	C
CMIFLT-5-1	1-300	0.2/0.5	0.6/1.0	1.5/2.0	25/20	23/20	20/18			8	0.6	T12-6
CMIFLT-5-0820	800-2000		0.8/1.5			18				10	1.0	T19

CALL OUR SALES DEPARTMENT FOR MORE INFORMATION OR VARIATIONS OF THIS PRODUCT.

**Corry Micronics, Inc. One Plastics Rd. - Corry, PA 16407
(814) 664-7728 Fax (814) 664-4582 www.cormic.com**

Corry Micronics Inc. herein referred to CMI, believes this information to be accurate, but makes no warranties, expressed or implied as to the accuracy of this document. CMI assumes no liability for any injury, loss, damage, direct or consequential arising from the use of our products. User assumes all risk whatsoever in connection with it's intended use. CMI also reserves the right to change this document without notice.

6Way												
Model No.	Freq. Range (MHz) fL-fU	Insertion Loss (dB)			Isolation (dB)			(VSWR)		Unbalance		Case Style
		L	M	U	L	M	U	Max		Phase	Amp	
		Typ/Ma	Typ/Ma	Typ/Ma	Typ/Min	Typ/Min	Typ/Min	In	Out	(°) Max	(dB) Max	
CMIFLC-6-1	1-200	0.5/0.8	0.7/1.0	1.0/1.5	30/24	26/18	26/18			12	0.8	C
CMIFLT-6-1	1-200	0.75/1.0	0.75/1.2	0.75/1.2	25/20	25/20	25/20			12	0.6	T31
*CMIFLT-6-1-75	1-200	0.75/1.0	0.75/1.2	0.75/1.2	25/30	25/30	25/30			12	0.6	T31
CMIFLT-6-1W	1-300	1.2/1.8	1.2/1.8	1.2/1.8	30/25	30/25	30/25			40	0.4	T3
CMIFLT-6-0809	890-960		0.8			20					0.6	T3
CMIFLT-6-0810	800-1000		0.9			20		1.2	1.2		0.5	T20

*75Ω Model

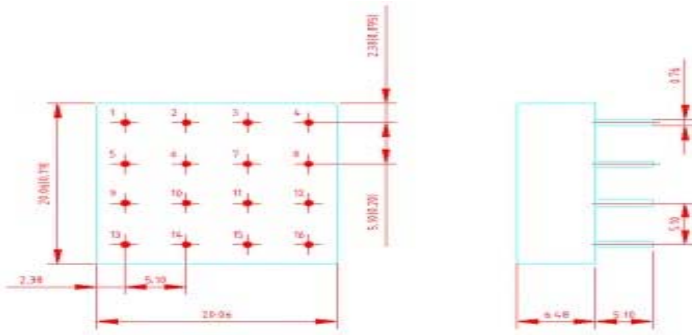
Pin Connections:

Model No.	Sum Port	Divide Port	Gnd Ext.
CMIFLC-5-	1	4,8,12,15,16	2,5,7,11,13,14
CMIFLC-6-1	1	3,4,8,12,15,16	2,5,7,11, 14

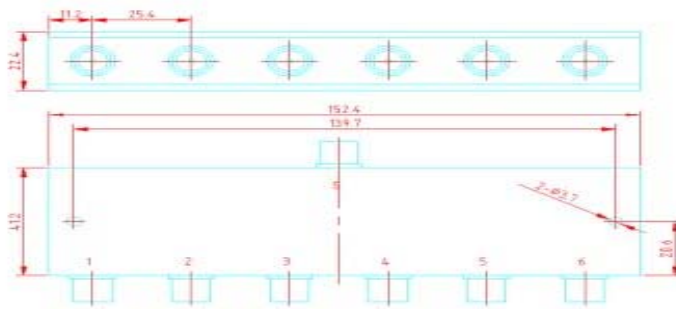
CALL OUR SALES DEPARTMENT FOR MORE INFORMATION OR VARIATIONS OF THIS PRODUCT.

**Corry Micronics, Inc. One Plastics Rd. - Corry, PA 16407
(814) 664-7728 Fax (814) 664-4582 www.cormic.com**

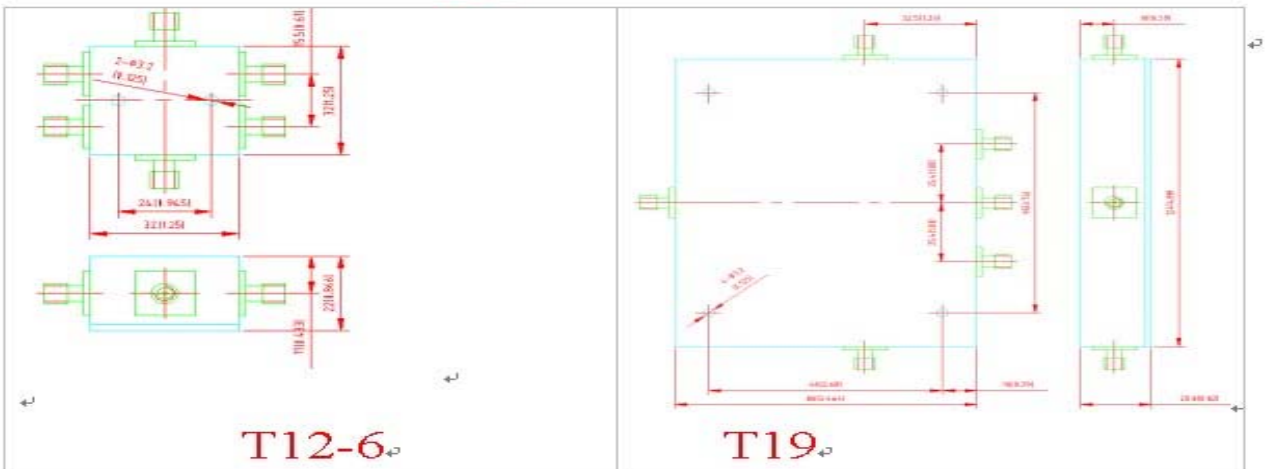
Corry Micronics Inc. herein referred to CMI, believes this information to be accurate, but makes no warranties, expressed or implied as to the accuracy of this document. CMI assumes no liability for any injury, loss, damage, direct or consequential arising from the use of our products. User assumes all risk whatsoever in connection with it's intended use. CMI also reserves the right to change this document without notice.



C



T3



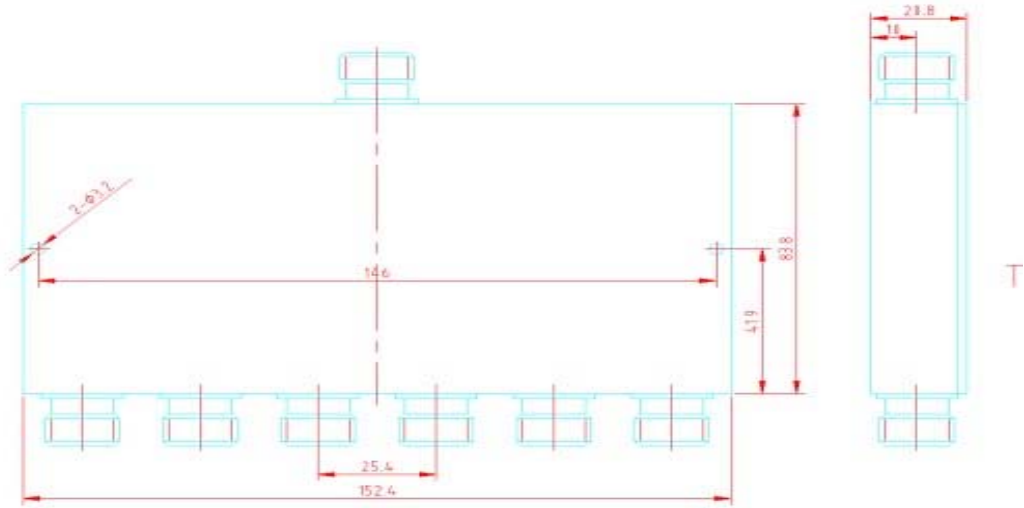
T12-6

T19

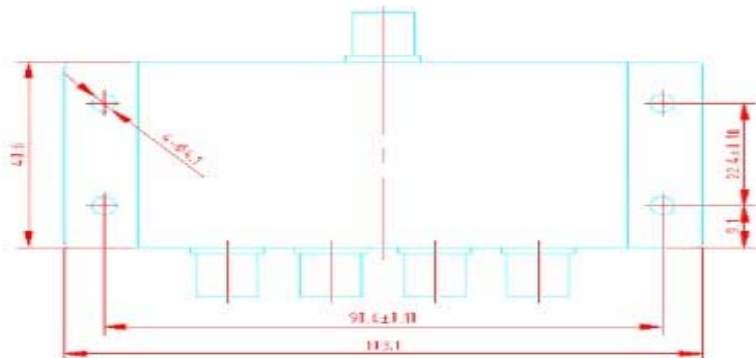
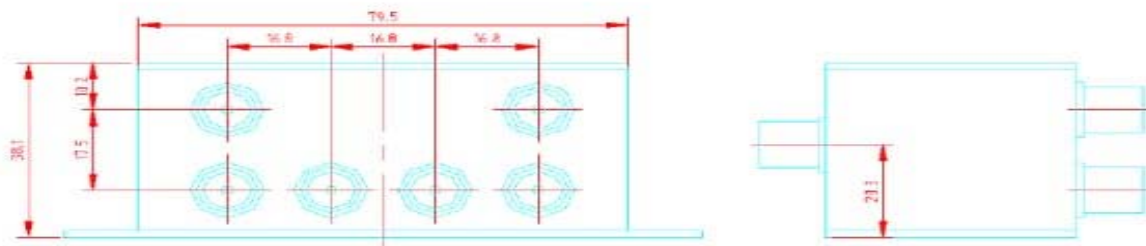
CALL OUR SALES DEPARTMENT FOR MORE INFORMATION OR VARIATIONS OF THIS PRODUCT.

**Corry Micronics, Inc. One Plastics Rd. - Corry, PA 16407
(814) 664-7728 Fax (814) 664-4582 www.cormic.com**

Corry Micronics Inc. herein referred to CMI, believes this information to be accurate, but makes no warranties, expressed or implied as to the accuracy of this document. CMI assumes no liability for any injury, loss, damage, direct or consequential arising from the use of our products. User assumes all risk whatsoever in connection with it's intended use. CMI also reserves the right to change this document without notice.



T20



T31

CALL OUR SALES DEPARTMENT FOR MORE INFORMATION OR VARIATIONS OF THIS PRODUCT.

**Corry Micronics, Inc. One Plastics Rd. - Corry, PA 16407
(814) 664-7728 Fax (814) 664-4582 www.cormic.com**

Corry Micronics Inc. herein referred to CMI, believes this information to be accurate, but makes no warranties, expressed or implied as to the accuracy of this document. CMI assumes no liability for any injury, loss, damage, direct or consequential arising from the use of our products. User assumes all risk whatsoever in connection with it's intended use. CMI also reserves the right to change this document without notice.

RF 0° 8&9-Way



C+



T32+

0° Power Splitters/Combiners 50Ω/75Ω

8Way												
Model No.	Freq. Range (MHz) fL-fU	Insertion Loss (dB)			Isolation (dB)			(VSWR)		Unbalance		Case Style
		L	M	U	L	M	U	Max		Phase	Amp	
		Typ/Ma	Typ/Ma	Typ/Ma	Typ/Min	Typ/Min	Typ/Min	In	Out	(°) Max	(dB) Max	
CMIFLC-8-1	1-200	0.8/1.2	0.8/1.2	1.0/1.6	30/25	30/20	25/18			5	0.5	C
CMIFLT-8-1	0.5-175	0.8/1.2	0.8/1.2	0.8/1.6	30/25	30/20	25/20			5	0.3	T32
*CMIFLT-8-1-75	0.5-175	0.5/1.0	0.6/1.1	0.7/1.3	25/20	30/20	25/20			5	0.3	T32
*CMIFLT-8-4-75	5-1000	0.4/1.0	0.6/1.6	1.6/2.7	30/20	25/20	20/15			13	1.2	T32
CMIFLT-8-1W	5-500	0.8/1.2	1.2/1.8	1.8/2.0	35/25	30/25	25/20			8	0.7	T13
CMIFLT-8-0810	800-1000	1.2/1.8	0.9			20		1.2			0.5	T21
CMIFLT-8-1020	1000-2000		1.0			20		1.5			0.5	T21
CMIFLT-8-3742	3700-4200		0.3/0.8			25		1.6	1.5	8	0.5	T21

*75Ω Model

CALL OUR SALES DEPARTMENT FOR MORE INFORMATION OR VARIATIONS OF THIS PRODUCT.

**Corry Micronics, Inc. One Plastics Rd. - Corry, PA 16407
(814) 664-7728 Fax (814) 664-4582 www.cormic.com**

Corry Micronics Inc. herein referred to CMI, believes this information to be accurate, but makes no warranties, expressed or implied as to the accuracy of this document. CMI assumes no liability for any injury, loss, damage, direct or consequential arising from the use of our products. User assumes all risk whatsoever in connection with it's intended use. CMI also reserves the right to change this document without notice.



PRODUCT SPECIFICATION

9Way												
Model No.	Freq. Range (MHz) fL-fU	Insertion Loss (dB)			Isolation (dB)			(VSWR)		Unbalance		Case Style
		L	M	U	L	M	U	Max		Phase	Amp	
		Typ/Ma	Typ/Ma	Typ/Ma	Typ/Min	Typ/Min	Typ/Min	In	Out	(°) Max	(dB) Max	
CMIFLC-9-1	2-300	0.6/1.1	0.9/1.4	1.5/2.0	35/25	25/20	20/15			10	0.8	C

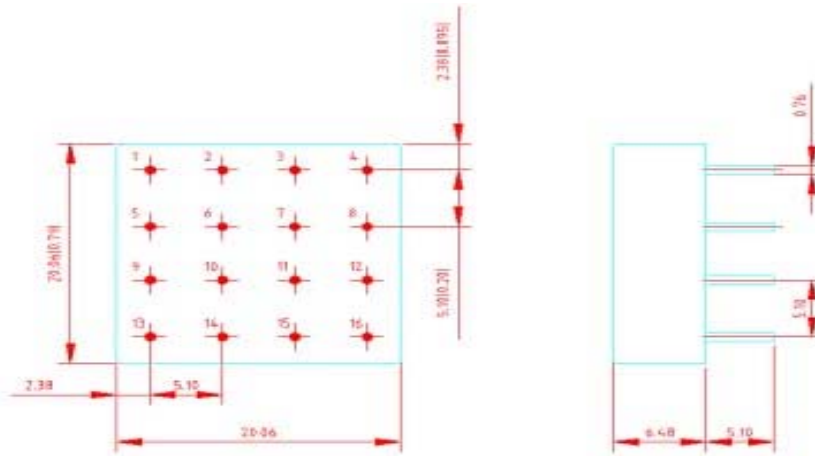
Pin Connections:

Model No.	Sum Port	Divide Port	Gnd Ext.
CMIFLC-8-1	2	1,5,9,13,16,12,8,4	3,6,7,14,15
CMIFLC-9-1	1	9,13,14,15,16,12,8,4,3	others

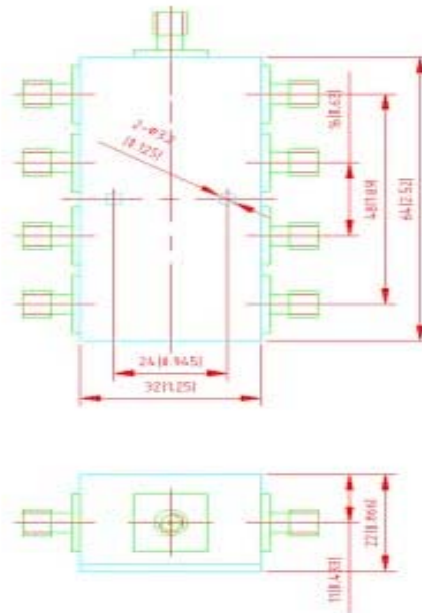
CALL OUR SALES DEPARTMENT FOR MORE INFORMATION OR VARIATIONS OF THIS PRODUCT.

**Corry Micronics, Inc. One Plastics Rd. - Corry, PA 16407
 (814) 664-7728 Fax (814) 664-4582 www.cormic.com**

Corry Micronics Inc. herein referred to CMI, believes this information to be accurate, but makes no warranties, expressed or implied as to the accuracy of this document. CMI assumes no liability for any injury, loss, damage, direct or consequential arising from the use of our products. User assumes all risk whatsoever in connection with it's intended use. CMI also reserves the right to change this document without notice.



C

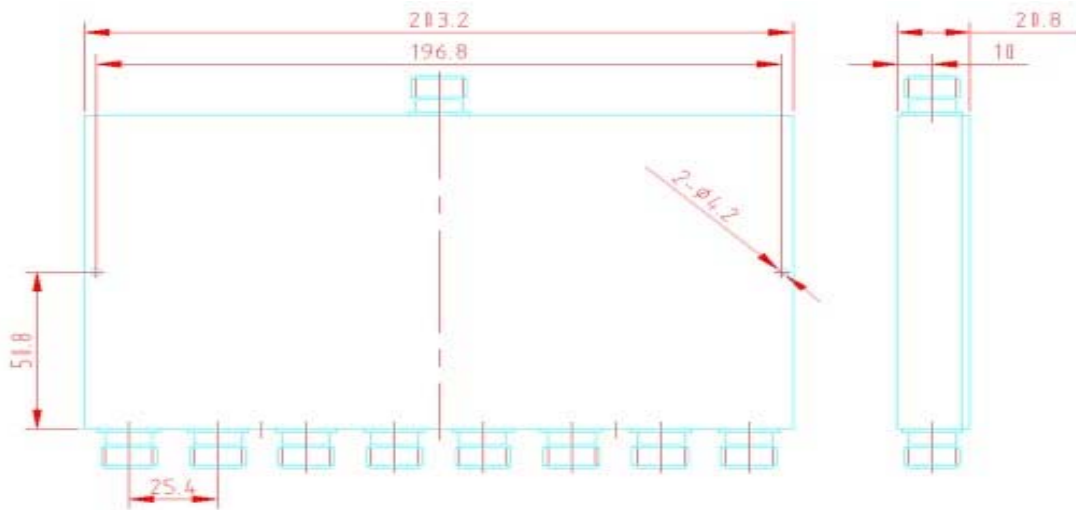


T13

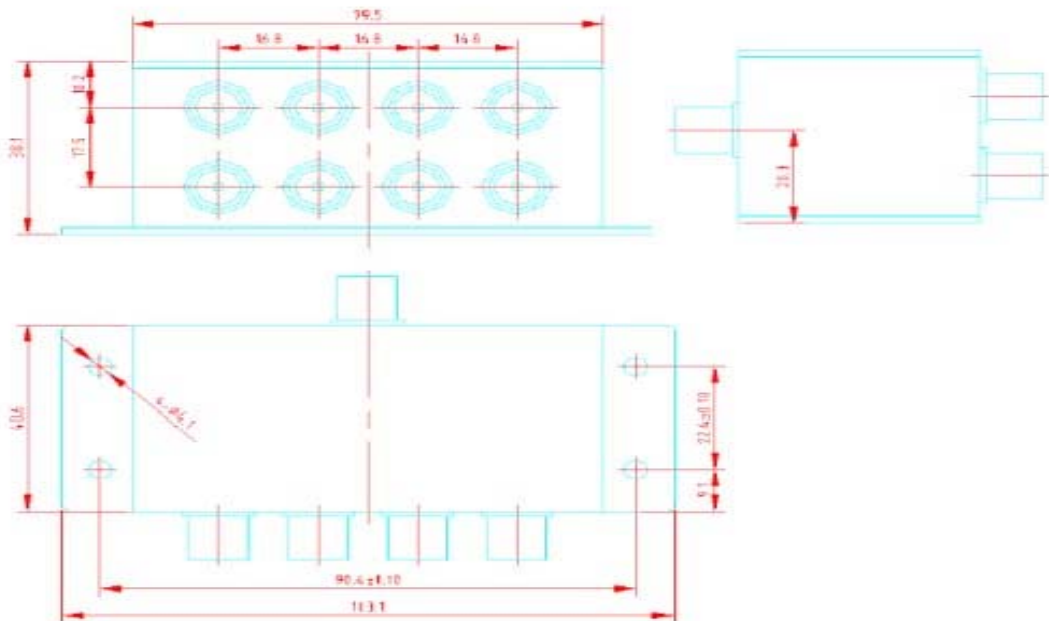
CALL OUR SALES DEPARTMENT FOR MORE INFORMATION OR VARIATIONS OF THIS PRODUCT.

Corry Micronics, Inc. One Plastics Rd. - Corry, PA 16407
(814) 664-7728 Fax (814) 664-4582 www.cormic.com

Corry Micronics Inc. herein referred to CMI, believes this information to be accurate, but makes no warranties, expressed or implied as to the accuracy of this document. CMI assumes no liability for any injury, loss, damage, direct or consequential arising from the use of our products. User assumes all risk whatsoever in connection with it's intended use. CMI also reserves the right to change this document without notice.



T21



T32

CALL OUR SALES DEPARTMENT FOR MORE INFORMATION OR VARIATIONS OF THIS PRODUCT.

**Corry Micronics, Inc. One Plastics Rd. - Corry, PA 16407
(814) 664-7728 Fax (814) 664-4582 www.cormic.com**

Corry Micronics Inc. herein referred to CMI, believes this information to be accurate, but makes no warranties, expressed or implied as to the accuracy of this document. CMI assumes no liability for any injury, loss, damage, direct or consequential arising from the use of our products. User assumes all risk whatsoever in connection with it's intended use. CMI also reserves the right to change this document without notice.

RF 0° 10&24-Way



T33



T23



T25

0° Power Splitters/Combiners 50Ω/75Ω

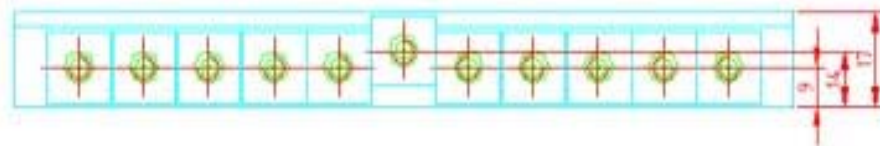
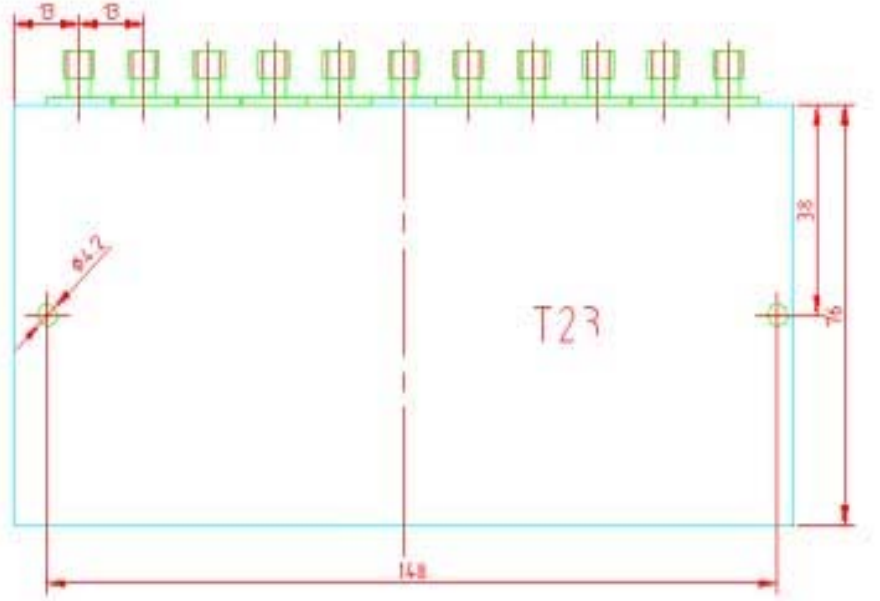
10Way													
Model No.	Freq. Range (MHz) fL-fU	Insertion Loss (dB)			Isolation (dB)			(VSWR)		Unbalance		Case Style	
		L	M	U	L	M	U	Max		Phase	Amp		
		Typ/Ma	Typ/Ma	Typ/Ma	Typ/Min	Typ/Min	Typ/Min	In	Out	(°) Max	(dB) Max		
CMIFLT-10-1	0.5-100	0.5/0.8	0.4/1.0	1.8/1	30/20	30/20	25/20				10	0.4	T23
CMIFLT-10-0809	800-900		1.5/2.0			25/20						0.6	T23
CMIFLT-10-0820	800-2000		1.0/2.5			25/18						1.2	T23

24Way													
Model No.	Freq. Range (MHz) fL-fU	Insertion Loss (dB)			Isolation (dB)			(VSWR)		Unbalance		Case Style	
		L	M	U	L	M	U	Max		Phase	Amp		
		Typ/Ma	Typ/Ma	Typ/Ma	Typ/Min	Typ/Min	Typ/Min	In	Out	(°) Max	(dB) Max		
CMIFLT-24-1	0.2-100	1.0/2.0	1.0/2.0	1.0/2.0	25/20	35/30	25/20					0.5	T25
CMIFLT-24-11	1-200	0.9/1.7	1.0/1.8	1.3/2.2	30/25	22/20	0/17					0.8	T25
CMIFLT-24-11-75	1-200	0.6/1.3	0.8/1.5	1.1/2.0	35/25	30/20	225/20					0.6	T25

CALL OUR SALES DEPARTMENT FOR MORE INFORMATION OR VARIATIONS OF THIS PRODUCT.

**Corry Micronics, Inc. One Plastics Rd. - Corry, PA 16407
(814) 664-7728 Fax (814) 664-4582 www.cormic.com**

Corry Micronics Inc. herein referred to CMI, believes this information to be accurate, but makes no warranties, expressed or implied as to the accuracy of this document. CMI assumes no liability for any injury, loss, damage, direct or consequential arising from the use of our products. User assumes all risk whatsoever in connection with it's intended use. CMI also reserves the right to change this document without notice.

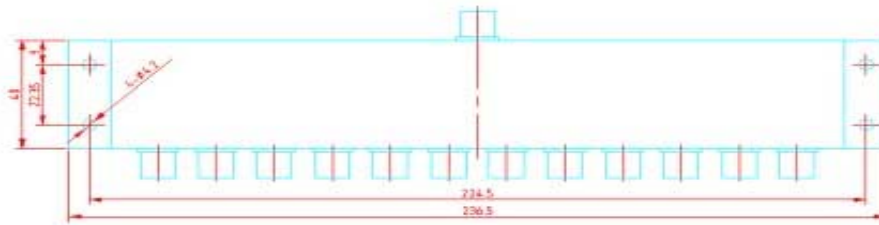
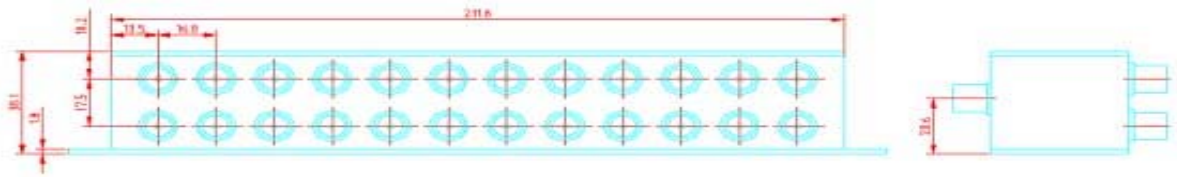


T23

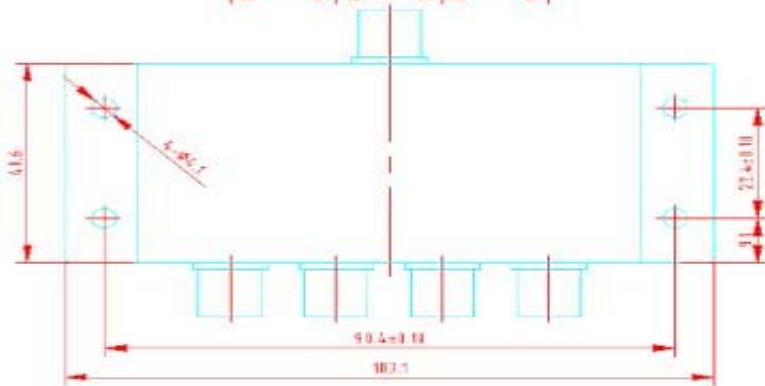
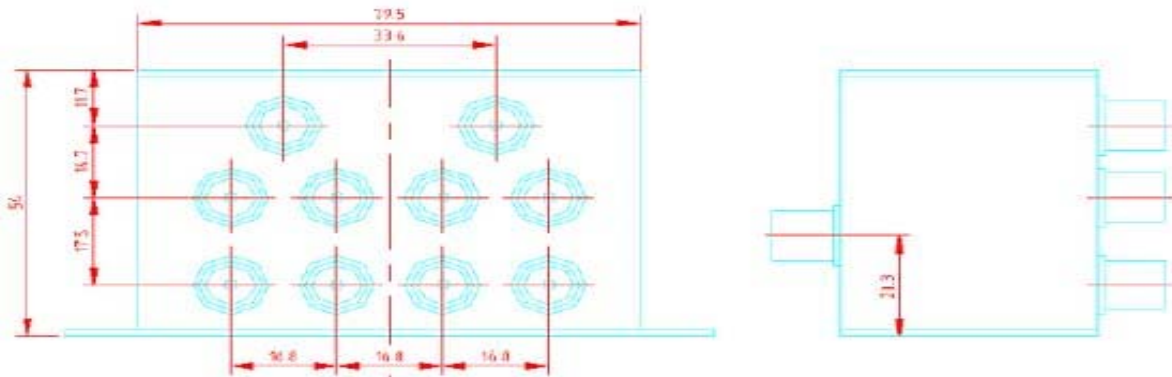
CALL OUR SALES DEPARTMENT FOR MORE INFORMATION OR VARIATIONS OF THIS PRODUCT.

**Corry Micronics, Inc. One Plastics Rd. - Corry, PA 16407
(814) 664-7728 Fax (814) 664-4582 www.cormic.com**

Corry Micronics Inc. herein referred to CMI, believes this information to be accurate, but makes no warranties, expressed or implied as to the accuracy of this document. CMI assumes no liability for any injury, loss, damage, direct or consequential arising from the use of our products. User assumes all risk whatsoever in connection with it's intended use. CMI also reserves the right to change this document without notice.



T25



T33

CALL OUR SALES DEPARTMENT FOR MORE INFORMATION OR VARIATIONS OF THIS PRODUCT.

**Corry Micronics, Inc. One Plastics Rd. - Corry, PA 16407
(814) 664-7728 Fax (814) 664-4582 www.cormic.com**

Corry Micronics Inc. herein referred to CMI, believes this information to be accurate, but makes no warranties, expressed or implied as to the accuracy of this document. CMI assumes no liability for any injury, loss, damage, direct or consequential arising from the use of our products. User assumes all risk whatsoever in connection with it's intended use. CMI also reserves the right to change this document without notice.

RF 90° 2-Way



A₁



E₂

90° Power Splitters/Combiners Flatpack

2Way												
Model No.	Freq. Range (MHz) fL-fU	Insertion Loss (dB)			Isolation (dB)			(VSWR)		Unbalance		Case Style
		L	M	U	L	M	U	Max		Phase	Amp	
		Typ/Ma	Typ/Ma	Typ/Ma	Typ/Min	Typ/Min	Typ/Min	In	Out	(°) Max	(dB) Max	
CMIFJH-2-20	10-20		0.3/0.7			25/20		1.2		3	1.0	H2
CMIFJH-2-40	20-40		0.3/0.7			25/20		1.2		3	1.0	H2
CMIFJH-2-60	30-60		0.3/0.7			25/20		1.2		5	1.5	H2
CMIFJH-2-80	40-80		0.3/0.7			25/20		1.2		5	1.5	H2
CMIFJH-2-90	55-90		0.3/0.7			25/20		1.2		5	1.5	H2
CMIFJH-2-120	80-120		0.3/0.7			25/20		1.2		5	1.5	H2
CMIFJH-2-160	100-160		0.3/0.7			25/20		1.2		5	1.5	H2
CMIFJH-2-240	120-240		0.3/0.8			25/20		1.3		5	1.5	H2
CMIFJH-2-300	150-300		0.4/0.8			25/20		1.3		5	1.5	H2

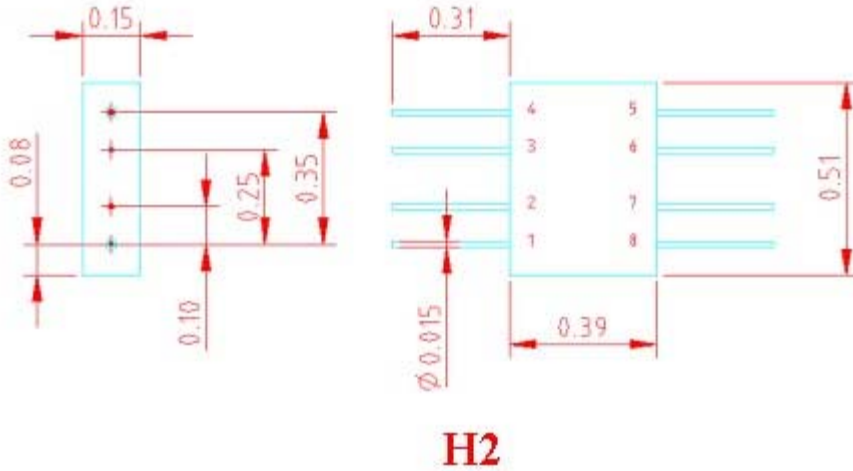
Pin Connections:

	1	8	5	4
1		0°	-90°	ISO
8	0°		ISO	-90°
5	-90°	ISO		0°
4	ISO	-90°	0°	

CALL OUR SALES DEPARTMENT FOR MORE INFORMATION OR VARIATIONS OF THIS PRODUCT.

**Corry Micronics, Inc. One Plastics Rd. - Corry, PA 16407
(814) 664-7728 Fax (814) 664-4582 www.cormic.com**

Corry Micronics Inc. herein referred to CMI, believes this information to be accurate, but makes no warranties, expressed or implied as to the accuracy of this document. CMI assumes no liability for any injury, loss, damage, direct or consequential arising from the use of our products. User assumes all risk whatsoever in connection with it's intended use. CMI also reserves the right to change this document without notice.



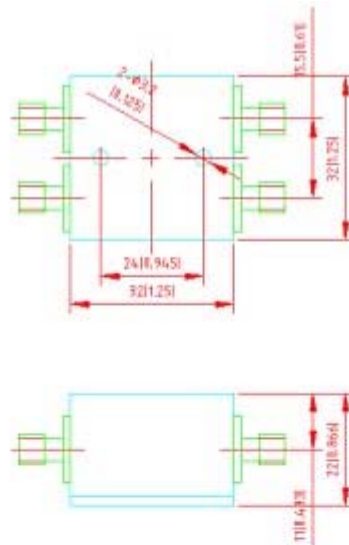
90° Power Splitters/Combiners Coaxial Connector

2Way												
Model No.	Freq. Range (MHz) fL-fU	Insertion Loss (dB)			Isolation (dB)			(VSWR)		Unbalance		Case Style
		L	M	U	L	M	U	Max		Phase	Amp	
		Typ/Ma	Typ/Ma	Typ/Ma	Typ/Min	Typ/Min	Typ/Min	In	Out	(°) Max	(dB) Max	
CMIFJT-2-40	20-40		0.3/0.7			25/20		1.2		3	1.0	T12-8
CMIFJT-2-80	40-80		0.3/0.7			25/20		1.2		3	1.5	T12-8
CMIFJT-2-160	80-160		0.3/0.7			25/20		1.2		3	1.5	T12-8
CMIFJT-2-1020	1000-2000		0.4/1.0			25/20		1.3		2	1.0	T27
CMIFJT-2-2030	2000-3000		0.4/1.0			25/20		1.3		2	1.0	T27

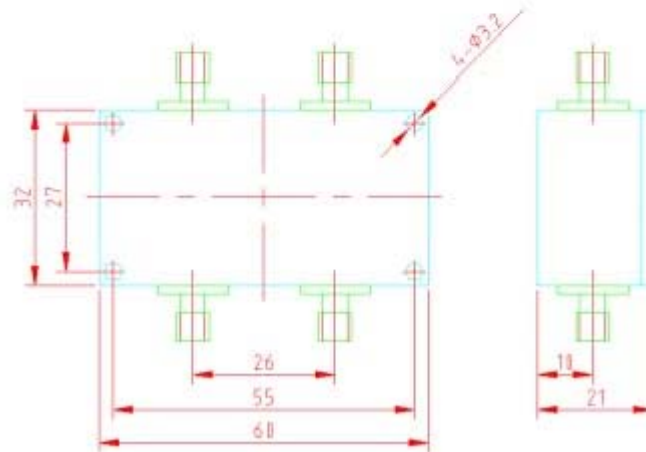
CALL OUR SALES DEPARTMENT FOR MORE INFORMATION OR VARIATIONS OF THIS PRODUCT.

**Corry Micronics, Inc. One Plastics Rd. - Corry, PA 16407
(814) 664-7728 Fax (814) 664-4582 www.cormic.com**

Corry Micronics Inc. herein referred to CMI, believes this information to be accurate, but makes no warranties, expressed or implied as to the accuracy of this document. CMI assumes no liability for any injury, loss, damage, direct or consequential arising from the use of our products. User assumes all risk whatsoever in connection with it's intended use. CMI also reserves the right to change this document without notice.



T12-8



T27

CALL OUR SALES DEPARTMENT FOR MORE INFORMATION OR VARIATIONS OF THIS PRODUCT.

**Corry Micronics, Inc. One Plastics Rd. - Corry, PA 16407
(814) 664-7728 Fax (814) 664-4582 www.cormic.com**

Corry Micronics Inc. herein referred to CMI, believes this information to be accurate, but makes no warranties, expressed or implied as to the accuracy of this document. CMI assumes no liability for any injury, loss, damage, direct or consequential arising from the use of our products. User assumes all risk whatsoever in connection with it's intended use. CMI also reserves the right to change this document without notice.

90° Power Splitters/Combiners Broadband, Plug-In

2Way												
Model No.	Freq. Range (MHz) fL-fU	Insertion Loss (dB)			Isolation (dB)			(VSWR)		Unbalance		Case Style
		L	M	U	L	M	U	Max		Phase	Amp	
		Typ/Ma	Typ/Ma	Typ/Ma	Typ/Min	Typ/Min	Typ/Min	In	Out	(°) Max	(dB) Max	
CMIFJA-60S	20-60			0.8/1.0			23/20	1.3		3	1.2	A1
CMIFJA-90S	30-90			0.8/1.2			23/18	1.3		3	1.2	A1
CMIFJA-50W	10-50			0.8/1.0			25/20	1.5		3	1.0	A1
CMIFJA-100W	20-100			0.8/1.0			25/20	1.5		3	1.0	A1
CMIFJA-300W	60-300			0.9/1.2			25/18	1.5		4	1.0	A1
CMIFJA-2-32D	3-32			1.0/1.5			25/20	1.5		4	1.5	A1
CMIFJA-2-250D	25-250			1.0/1.5			25/17	1.5		5	1.5	A1
CMIFJA-2-500D	50-500			1.7/2.0			25/17	1.5		5	1.5	A1

Pin Connections:

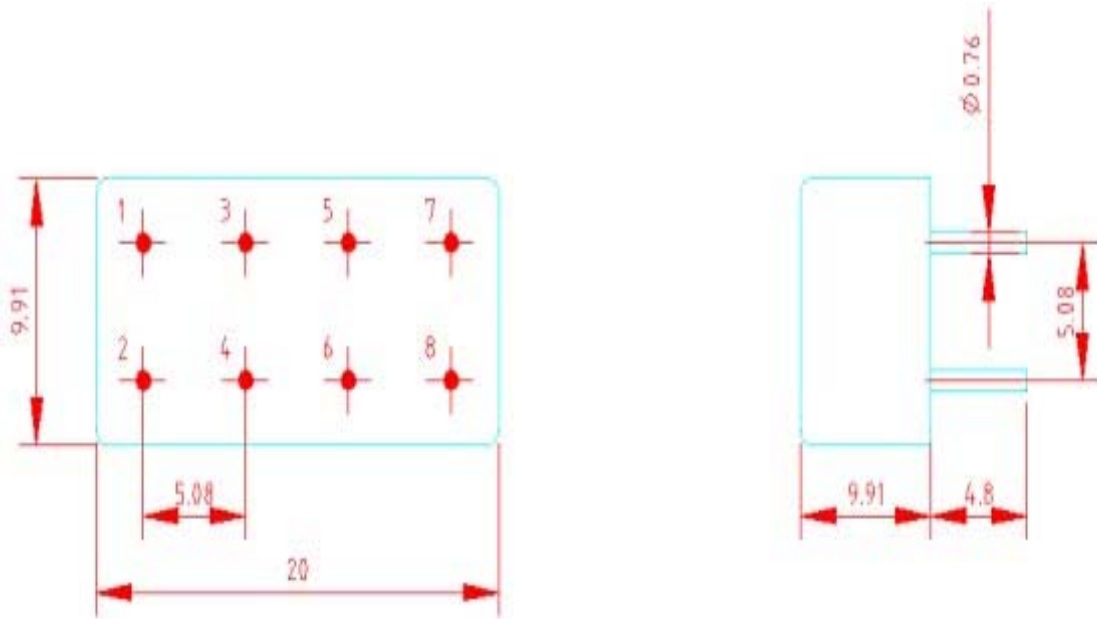
Model No.	Sum Port	Port 1	Port 2	*Isolation Port	Gnd Ext.
CMIFJA-2-	1	2	5	6	3,4,7,8
CMIFJA-2-1000	1	2	8	7	3,4,5,6
CMIFJA-2-D	1	7	8	2	3,4,5,6
CMIFJS-S	1	7	8	2	3,4,5,6
CMIFJS-W	1	7	8	2	3,4,5,6
CMIFJS-D	1	7	8	2	3,4,5,6

*Connect 50Ω resistor to grand

CALL OUR SALES DEPARTMENT FOR MORE INFORMATION OR VARIATIONS OF THIS PRODUCT.

**Corry Micronics, Inc. One Plastics Rd. - Corry, PA 16407
(814) 664-7728 Fax (814) 664-4582 www.cormic.com**

Corry Micronics Inc. herein referred to CMI, believes this information to be accurate, but makes no warranties, expressed or implied as to the accuracy of this document. CMI assumes no liability for any injury, loss, damage, direct or consequential arising from the use of our products. User assumes all risk whatsoever in connection with it's intended use. CMI also reserves the right to change this document without notice.



A1

CALL OUR SALES DEPARTMENT FOR MORE INFORMATION OR VARIATIONS OF THIS PRODUCT.

**Corry Micronics, Inc. One Plastics Rd. - Corry, PA 16407
(814) 664-7728 Fax (814) 664-4582 www.cormic.com**

Corry Micronics Inc. herein referred to CMI, believes this information to be accurate, but makes no warranties, expressed or implied as to the accuracy of this document. CMI assumes no liability for any injury, loss, damage, direct or consequential arising from the use of our products. User assumes all risk whatsoever in connection with it's intended use. CMI also reserves the right to change this document without notice.

RF 180° 2-Way



A₁



H₁



T12-3



T15-1

Power Splitters/Combiners Plug-In & Coaxial

2Way												
Model No.	Freq. Range (MHz) fL-fU	Insertion Loss (dB)			Isolation (dB)			(VSWR)		Unbalance		Case Style
		L	M	U	L	M	U	Max		Phase (°)	Amp (dB)	
		Typ/Ma	Typ/Ma	Typ/Ma	Typ/Min	Typ/Min	Typ/Min	In	Out	Max	Max	
CMICMIFYA-2-1	1-200	0.75/1.0	0.5/0.8	0.75/1.2	30/25	30/25	30/20			4	0.3	A1
CMICMIFYA-2-1W	10-600	1.0/1.5	1.1/1.6	1.2/2.2	30/25	25/20	20/16			6	0.9	A1
CMICMIFYA-2-2	0.1-50	1.0/1.5	1.0/1.5	1.0/1.5	30/25	30/25	25/20			3	0.5	A1
CMICMIFYA-2-4	50-1000	1.2/1.9		1.6/2.4	30/20		25/20			7	1.0	A1
*CMICMIFYA-2-1Z	5-200	0.8/1.0	0.9/1.1	1.0/1.5	22/20	24/20	24/18			8	0.5	A1
CMICMIFYH-2-1	1-200	0.75/1.0	0.5/0.8	0.75/1.2	30/25	30/25	30/25			4	0.3	H1
CMICMIFYH-2-1W	5-400	1.0/1.5	0.75/1.0	1.0/1.5	30/25	30/25	30/25			4	0.4	H1
CMIFYT-2-1	1-200	0.75/1.0	0.5/0.8	0.75/1.2	30/25	30/25	30/20			4	0.3	T12-3
CMIFYT-2-1W	10-600	1.0/1.5	1.1/1.6	1.2/2.2	30/25	25/20	20/16			6	0.9	T12-3
CMIFYT-2-2	0.1-50	0.5/1.0	0.5/1.0	0.5/1.0	30/25	30/25	25/20			3	0.5	T12-3
CMIFYT-2-4	50-1000	1.2/1.9		1.6/2.4	30/20		25/20			7	1.0	T12-3
CMIFYT-2-0515	50-1500	1.0/1.2	1.5	2.0	14	14	14			4	1.0	T12-3
CMIFYT-2-1020	1000-2000		1.5/2.0			22/18				6	0.8	T15-1
CMIFYT-2-1030	1000-3000		1.5/2.5			22/18				6	1.0	T15-1

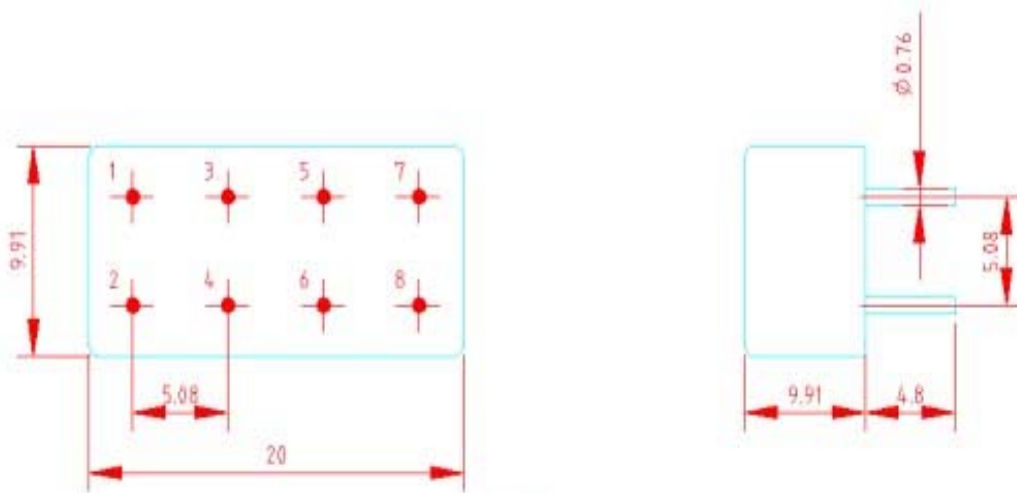
CALL OUR SALES DEPARTMENT FOR MORE INFORMATION OR VARIATIONS OF THIS PRODUCT.

**Corry Micronics, Inc. One Plastics Rd. - Corry, PA 16407
(814) 664-7728 Fax (814) 664-4582 www.cormic.com**

Corry Micronics Inc. herein referred to CMI, believes this information to be accurate, but makes no warranties, expressed or implied as to the accuracy of this document. CMI assumes no liability for any injury, loss, damage, direct or consequential arising from the use of our products. User assumes all risk whatsoever in connection with it's intended use. CMI also reserves the right to change this document without notice.

Pin Connections:

Model No.	Sum Port	Port 1	Port 2	Subtractive Port	Gnd Ext.
CMIFYA-2-X	1	5	6		2,3,4,7,8
*CMIFYA-2-1Z	1	2	3	4	5,6,7,8
CMIFYH-2-X	8	4	5		2,3,5,6,7

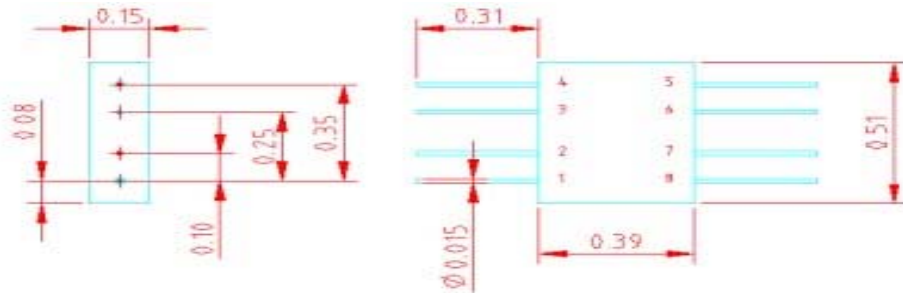


A1

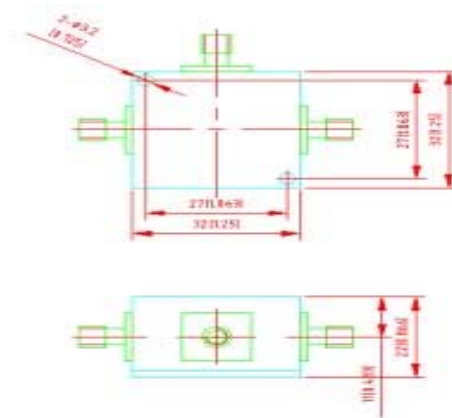
CALL OUR SALES DEPARTMENT FOR MORE INFORMATION OR VARIATIONS OF THIS PRODUCT.

**Corry Micronics, Inc. One Plastics Rd. - Corry, PA 16407
(814) 664-7728 Fax (814) 664-4582 www.cormic.com**

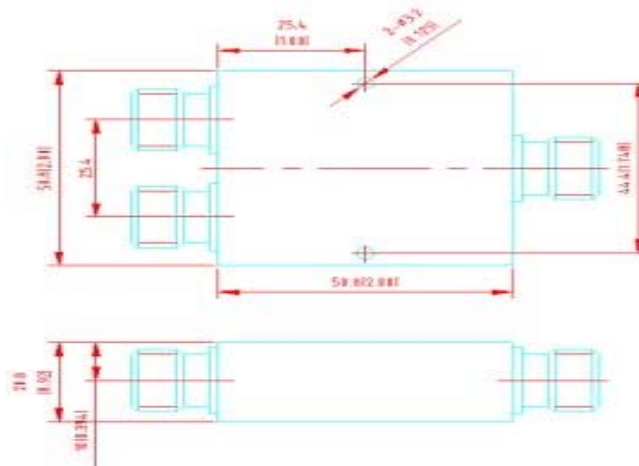
Corry Micronics Inc. herein referred to CMI, believes this information to be accurate, but makes no warranties, expressed or implied as to the accuracy of this document. CMI assumes no liability for any injury, loss, damage, direct or consequential arising from the use of our products. User assumes all risk whatsoever in connection with it's intended use. CMI also reserves the right to change this document without notice.



H1



T12-3



T15-1

CALL OUR SALES DEPARTMENT FOR MORE INFORMATION OR VARIATIONS OF THIS PRODUCT.

**Corry Micronics, Inc. One Plastics Rd. - Corry, PA 16407
(814) 664-7728 Fax (814) 664-4582 www.cormic.com**

Corry Micronics Inc. herein referred to CMI, believes this information to be accurate, but makes no warranties, expressed or implied as to the accuracy of this document. CMI assumes no liability for any injury, loss, damage, direct or consequential arising from the use of our products. User assumes all risk whatsoever in connection with it's intended use. CMI also reserves the right to change this document without notice.